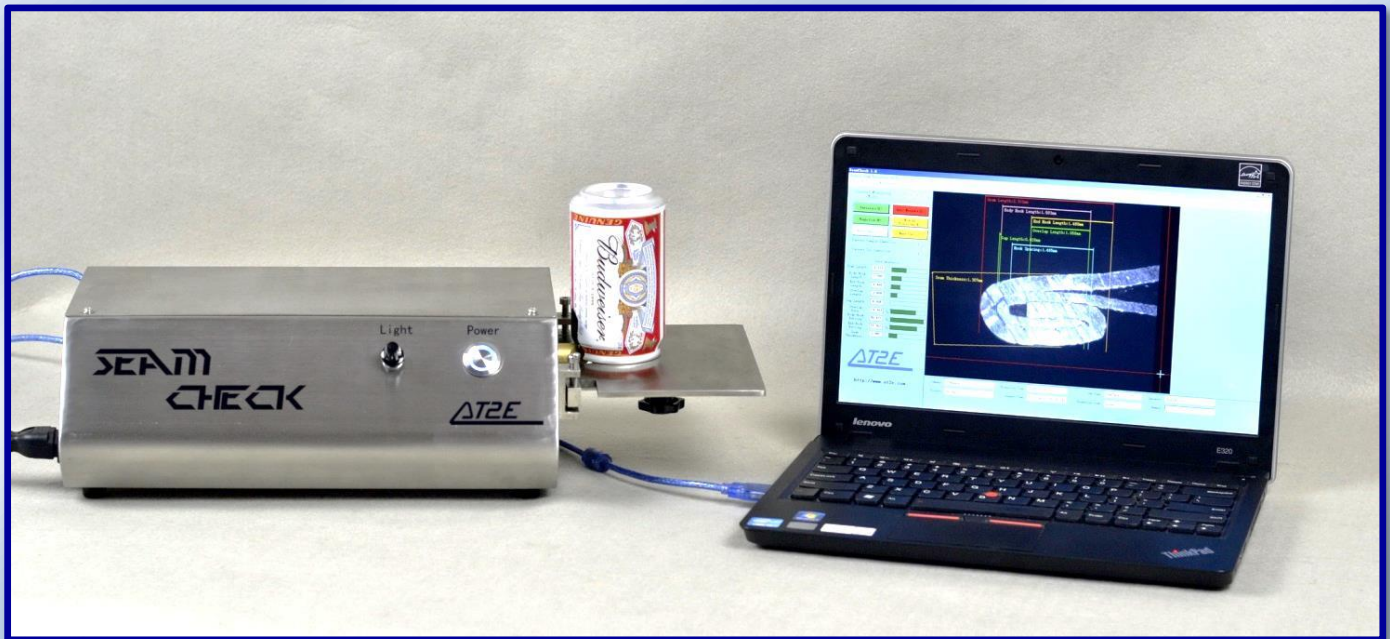


SeamCheck - Automatic Double Seam Projector



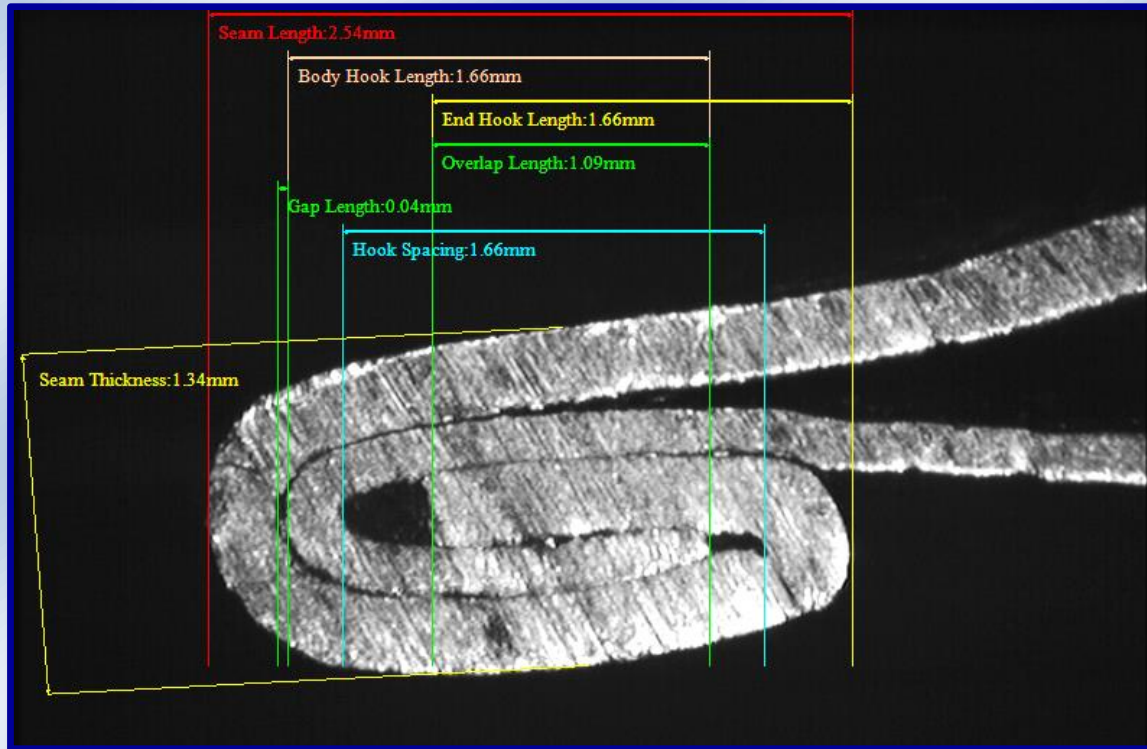
Seaming quality is critical and important for can inspection. And it's the one of the most concerned point for can, beverage and food manufacturing companies. AT2E SeamCheck Automatic Double Seam Projector provides the most convenient way to accomplish the seam inspection.

Using with AT2E seam saw, a clear seam section image could be obtained. Along with professional SeamCheck software, a fast and accurate seam measurement could be done.

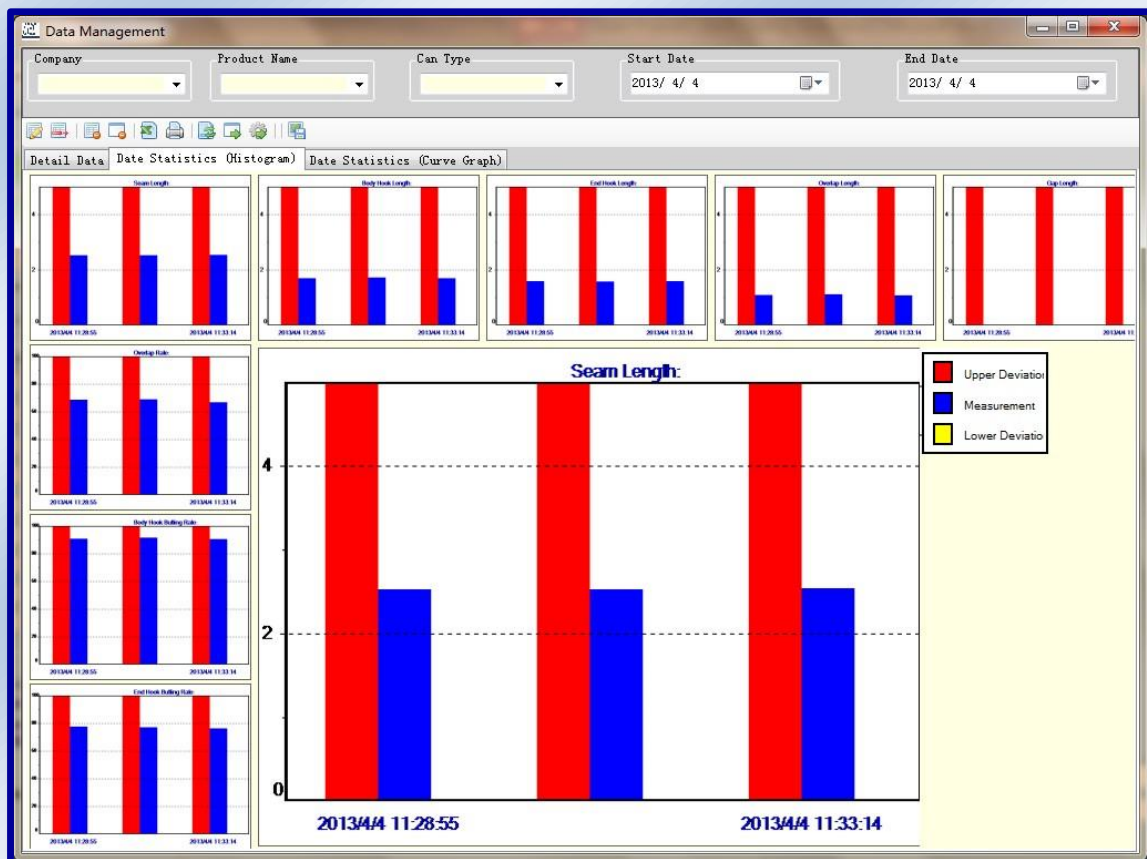
Characteristics:

- Automatic line positioning (auto-measure function), measurement will be done in 1 second
- Equipped with advanced video capture device which interference-free of external light source and ensured the high image definition
- Software adopted database management system, measuring results and images can be saved in the database and users can review the saved data at any time
- 9 measuring parameters: Seam Length, Body Hook Length, End Hook Length, Overlap, Seam gap, Overlap rate, Body Hook lapping rate, End Hook lapping rate, On-screen Seam Thickness. (Able to extend to 12 parameters through extra gauges, included actual Seam Thickness, actual countersink and Tightness)
- SPC compatible, use a data adapter to collect the data from Mitutoyo Digital Indicator (Actual Seam Thickness; Actual countersink; Actual can height, Actual flange width)
- Data can be exported as an Excel file
- Report format can be customized, flexible for different report styles of different companies
- Predefine various qualification standards, auto judge and warn whether the results are qualified in every measure
- Measurement results and label lines mark directly on the image, results will also display in corresponding field on the screen
- Graph chart statistic function, automatically analyze and compare the measurement results
- Magnifier option enable users to magnify the testing image for a more accurate line positioning
- Measured values are displayed in on-screen and alarm if values are not within specs

- Seam image can be printed and stored
- Provided with calibration piece, calibrate at any time
- Platform adjustable
- Light adjustable



Seam measuring screen



Data statistic screen

Image Report			
Company	Company	Product Name	Product
Operator	Inspector	Shift	Time
Project ID	20130404101001	Remark	UserRemark
Can Type	CanType	Production Date	2009-07-22
Production Line	Line	Units	mm
Sample	1	Cut	1
Measuring Mode	Complete +Thickness	Inspect Time	2013/4/4 10:21:02
Seam Length	2.495	Body Hook Length	1.676
End Hook Length	1.584	Overlap Length	1.089
Gap Length	0.037	Seam Thickness	1.382
Overlap Rate	67.424	Body Hook Butting Rate	89.773
End Hook Butting Rate	77.652	Left Gap	0.361
Right Gap	0.165	Hook Spacing	1.615

Image Report

Data Report			
Company	Company	Product Name	Product
End Supplier	CanSupplier	End Code	CanCode
Can Supplier	EndSupplier	Can Code	EndCode
Operator	Inspector	Shift	Time
Project ID	20130404112416	User Remark	UserRemark
Can Type	CanType	Production Date	2013-03-22
Production Line	Line	Units	mm
Total Sample Amount	12	Total Gut. Amount	3

Inspect Time	Seam Len. Cut	Seam Length	Body Hook Length	End Hook Length	Overlap Length	Gap Length	Body Hook Butting Rate	End Hook Butting Rate	Seam Thickness	Overlap Rate	Left Gap	Right Gap	Hook Spacing	Seam Thickness
2009/07/22 10:00:00	1	2.500	1.700	1.000	1.100	0.010	88.000	90.000	1.000	0.000	0.000	0.000	1.000	0.000
2009/07/22 10:00:01	1	2.500	1.700	1.000	1.100	0.010	88.000	90.000	1.000	0.000	0.000	0.000	1.000	0.000
2009/07/22 10:00:02	1	2.500	1.700	1.000	1.100	0.010	88.000	90.000	1.000	0.000	0.000	0.000	1.000	0.000
Minimum Value		2.500	1.700	1.000	1.089	0.010	88.000	90.000	1.382	0.000	0.000	0.000	1.615	0.000
Maximum Value		2.500	1.700	1.089	1.119	0.010	89.000	91.000	1.000	0.000	0.000	0.000	1.615	0.000
Range		0.010	0.010	0.010	0.030	0.010	1.000	1.000	0.000	0.000	0.000	0.000	0.000	0.000
Average Value		2.500	1.712	1.090	1.102	0.010	88.222	90.500	1.119	0.000	0.000	0.000	1.615	0.000

Data Report

Equipment includes:

1. SeamCheck video seam projector
2. SeamCheck professional seam measurement software
3. 2 mm calibration piece

Technical specifications:

Power supply:	220 V
Serial interface:	RS 232
Resolution:	0.001mm
Accuracy:	0.005 mm
Magnification factor:	60 X
Line positioning magnification factor:	180 X
Platform capacity:	Up to 180 mm dia. can
Dimension:	470 (L) x 200 (W) x 125 (H) mm
Net weight:	5 kg

Optional parts:

- ANSS – Antinoise Seaming Cutting Saw / SS-1 Seaming Cutting Saw
- STG-1 Seam Thickness Gauge (digital)
- CG-D Countersink Gauge (digital)
- FWG-1 Flange Width Gauge
- HG-1 Height Gauge
- DTB-1 Data transporting Box with cables



Optional seaming cutting saw: ANSS & SS-1



SeamCheck connecting with optional gauges through DTB-1