



## KTVVP-750 Series

Vortex Flow meter with Temperature and Pressure Compensation

### FEATURE

- Temperature, pressure, and flow sensors all-in-one product
- Installation and maintenance costs are lower than those of other products
- Flange type or space-saving wafer type is selectively available
- Reduce Tube Size compared to Connection Size
- Excellent durability and long life thanks to no driving part present
- Applicable to varied fluids such as liquids, gases, steam, etc.
- Wide range of flow measurement and relatively low pressure loss

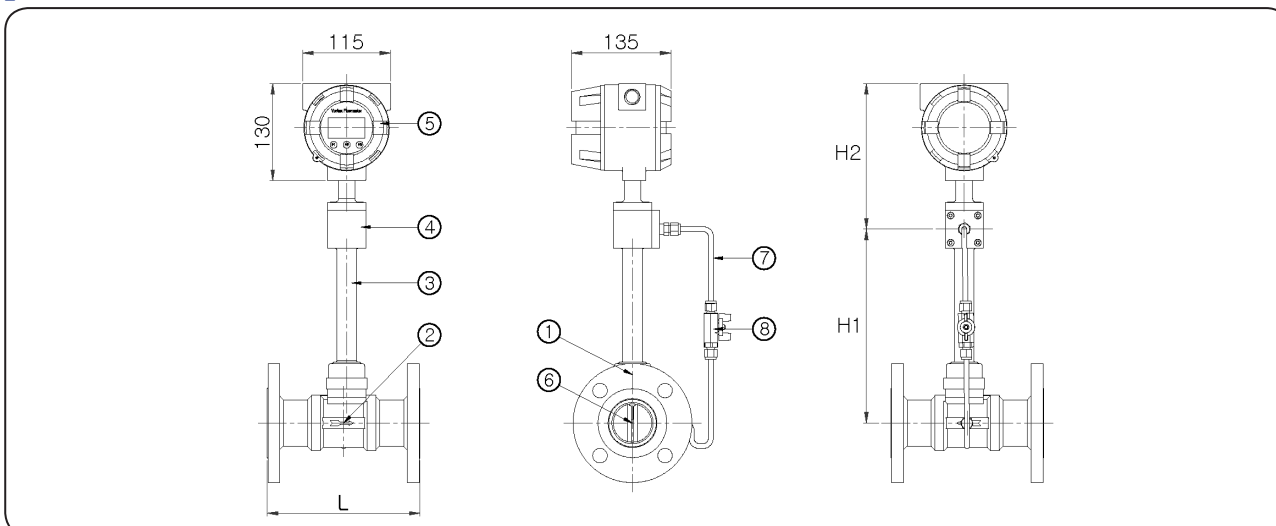
### APPLICATIONS

- ▶ General Application
  - Auxiliary and supply lines used for energy distribution
- ▶ Chemical and Other Process Industries
  - Gas, welding gas, steam, hydrocarbons, heat oil, etc.
  - Petrochemical products (benzene, ethylene, etc.)
- ▶ Iron, Steel and Metal Industry
  - Cooling circuit Oxygen, natural gas, steam
- ▶ Sewage & Renewable energy Industry
  - Dry and humid biogas at the entrance to the CHP system
- ▶ Paper business
  - Compressed air, steam, etc.

## KTVP-750 General Specifications

<b>Size</b>	15A (1/2") - 300A (12")
<b>Process Connection</b>	Flange type - Standard JIS10K RF (Option. ANSI 150#, DIN 16 bar) Wafer type
<b>Measuring Range</b>	Water - 0.7 m <sup>3</sup> /h – 1800 m <sup>3</sup> /h Gas - 3.5 Nm <sup>3</sup> /h – 11000 Nm <sup>3</sup> /h
<b>Accuracy</b>	±1.0 % F.S (Option ±0.5 %)
<b>Fluid Temperature</b>	-40 °C ~ 250 °C (Option 350 °C)
<b>Ambient Temperature</b>	-25 °C ~ 60 °C
<b>Max Pressure</b>	20 kgf/cm <sup>2</sup> .G (Option 40 kgf/cm <sup>2</sup> .G)
<b>Power Supply</b>	DC 24 V (2-Wire)
<b>Display</b>	LCD Display (Flowrate, Totalizer, Temperature, Pressure)
<b>Output</b>	DC 4-20 mA, Pulse (Option RS-485)
<b>Protection Class</b>	Ex d IIC T5 / IP67

### STRUCTURAL DRAWING



### DIMENSIONS

Size		L	H1	H2
mm	inch			
15	1/2"	200	200	195
20	3/4"	200		
25	1"	200		
40	1-1/2"	200		
50	2"	200		
65	2-1/2"	200	220	
80	3"	200	240	
100	4"	250	250	
125	5"	250	260	
150	6"	300	300	
200	8"	350	320	
250	10"	400	340	
300	12"	500		

### STANDARD MATERIAL

No.	Description	Material	
		A	B
1	Flange	304SS	316SS
2	Body	304SS	316SS
3	Bar	304SS	
4	Press' Sensor Housing	304SS	316SS
5	Indicator	CAST ALUMINUM	
6	Flow & Temp' Sensor	304SS	316SS
7	Press' Tube	316SS	
8	Valve	304SS	

\* Height (H1, H2) can be changed according to specifications.

### ■ NORMAL FLOW RANGES

Size		Water (m <sup>3</sup> /h)	Gas (Nm <sup>3</sup> /h) *1 atm / 20°C 기준
mm	inch		
15	1/2"	0.7 - 7	3.5 - 35
20	3/4"	1 - 10	5 - 50
25	1"	1.6 - 16	7 - 70
40	1-1/2"	2.5 - 25	22 - 220
50	2"	3.5 - 35	32 - 320
65	2-1/2"	6.8 - 68	48 - 480
80	3"	10 - 100	64 - 640
100	4"	15 - 150	110 - 1100
125	5"	27.5 - 275	170 - 1700
150	6"	40 - 400	224 - 2240
200	8"	80 - 800	496 - 4960
250	10"	120 - 1,200	800 - 8000
300	12"	180 - 1,800	1100 - 11000

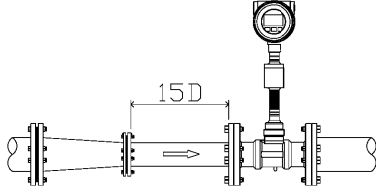
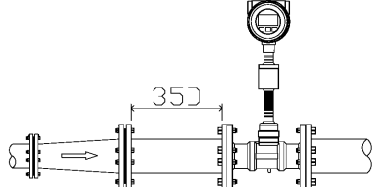
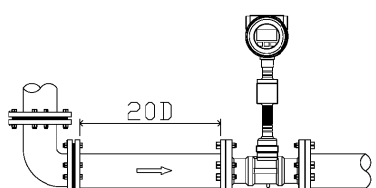
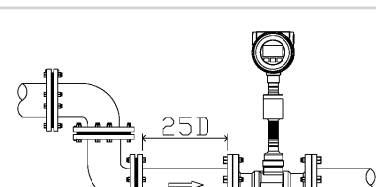
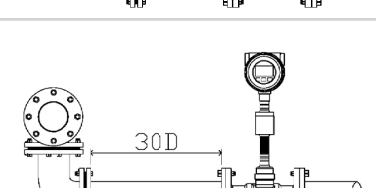
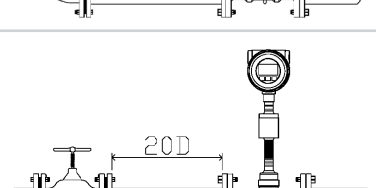
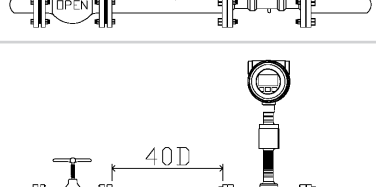
### ■ GAS FLOW RANGES

Size		Max. Flow ranges (Nm <sup>3</sup> /h) (1 atm/20 °C)					
mm	inch	1 kg/cm <sup>2</sup> .G	2 kg/cm <sup>2</sup> .G	4 kg/cm <sup>2</sup> .G	6 kg/cm <sup>2</sup> .G	8 kg/cm <sup>2</sup> .G	10 kg/cm <sup>2</sup> .G
15	1/2"	80	110	180	250	310	380
20	3/4"	110	150	250	350	440	540
25	1"	150	210	350	480	620	760
40	1-1/2"	440	650	1080	1510	1930	2360
50	2"	630	950	1570	2190	2810	3420
65	2-1/2"	950	1420	2350	3270	4200	5130
80	3"	1270	1890	3130	4360	5600	6840
100	4"	2170	3240	5370	7500	9620	11750
125	5"	3350	5000	8290	11580	14870	18160
150	6"	4420	6580	10920	15260	19590	23930
200	8"	9770	14570	24170	33770	43370	52970
250	10"	15750	23490	38980	54470	69950	85440
300	12"	21650	32300	53590	74890	96180	117470

### ■ SATURATED STEAM FLOW RANGES

Size		Max. Flow ranges (kg/h)					
mm	inch	1 kg/cm <sup>2</sup> .G	2 kg/cm <sup>2</sup> .G	4 kg/cm <sup>2</sup> .G	6 kg/cm <sup>2</sup> .G	8 kg/cm <sup>2</sup> .G	10 kg/cm <sup>2</sup> .G
15	1/2"	39	57	92	126	160	194
20	3/4"	55	81	131	180	229	277
25	1"	78	113	183	252	320	387
40	1-1/2"	244	357	577	792	1005	1217
50	2"	355	519	839	1152	1462	1771
65	2-1/2"	532	778	1258	1728	2194	2656
80	3"	710	1037	1677	2304	2925	3542
100	4"	1220	1783	2883	3960	5027	6087
125	5"	1885	2756	4456	6120	7769	9408
150	6"	2484	3631	5871	8064	10237	12396
200	8"	5501	8040	13000	17856	22667	27449
250	10"	8872	12968	20968	28800	36560	44272
300	12"	12199	17831	28831	39600	50270	60874

## DRAWING OF INSTALLATION

Classification	Upstream Pipe style	Length of straight Pipeline Inlet	Length of straight Pipeline Outlet
Concentric Shrink tube (동심축소관)		15D	7D
Concentric Enlarge tube (동심확대관)		35D	17D
Elbow		20D	10D
Two Same Plane elbow		25D	12D
Two Different Plane elbow		30D	15D
Full Open Valve		20D	10D
Semi Open Valve		40D	20D